

Hiab 160T

Capacity 16.1-15tm



Basic data



Hiab 160T-3 Basic data

Technical data

Hiab 160T-3

Max. lifting capacity (tm)	16.1
Max. working radius (m)	9.8
Max. working height (m)	11.0 Based on installation level

Outreach-capacity

Angle	1 st boom		2 nd boom		3 rd boom	
	R(m)	Q(kg)	R(m)	Q(kg)	R(m)	Q(kg)
80	0.58	6500	1.07	6000	1.57	4500
70	1.30	6500	2.28	4990	3.25	3490
60	1.98	6500	3.41	3710	4.83	2580
50	2.60	5460	4.43	3070	6.26	2120
40	3.13	4820	5.31	2680	7.49	1850
30	3.56	4380	6.02	2420	8.49	1660
20	3.87	4040	6.55	2210	9.23	1510
10	4.07	3730	6.87	2030	9.68	1380
0	4.13	3410	6.98	1840	9.83	1240

Recommended oil flow (liter/min.) 56

Working pressure (bar) 200

Boom	Type	Hexagonal, 3 sections
	Lifting angle / speed	0 – 80 degrees / 13 sec
	Extension speed	5.7 m / 22 sec.
Hoist	Type	Spur gear reduction with mechanical brake
	Lifting capacity	6500 kg at 4 falls
	Speed	Min. 9.5 m/min. – Max. 12 m/min. at 4 falls
Slewing	Type	Worm gear reduction with hydraulic brake
	Angle	360 degrees, continuous rotation
	Speed (rpm)	2.0

Outrigger span (m) 5.7

Weight including outrigger (kg) 2420, Approx.

Safety device	Counter balance valve	Hydraulic swing brake
	Pilot check valve	Hook latch
	Pressure relief valve	Auto hoist brake

Options OLP, Type of control, Aux. hoist, Aux. outrigger, Jib boom

Non CE Version

Hiab 160T-4 Basic data

Technical data

Hiab 160T-4

Max. lifting capacity (tm)	15.5
Max. working radius (m)	12.8
Max. working height (m)	14.0 Based on installation level

Outreach-capacity

Angle	1 st boom		2 nd boom		3 rd boom		4 th boom	
	R(m)	Q(kg)	R(m)	Q(kg)	R(m)	Q(kg)	R(m)	Q(kg)
80	0.60	6500	1.09	6000	1.59	4500	2.08	2400
70	1.34	6500	2.31	4640	3.29	3220	4.26	2400
60	2.04	6090	3.46	3410	4.89	2340	6.31	1760
50	2.67	5070	4.50	2790	6.33	1890	8.16	1410
40	3.21	4460	5.40	2420	7.58	1620	9.76	1200
30	3.65	4040	6.12	2160	8.59	1440	11.06	1060
20	3.98	3710	6.66	1960	9.33	1300	12.01	950
10	4.18	3420	6.98	1780	9.79	1170	12.60	850
0	4.25	3110	7.10	1600	9.95	1040	12.80	740

Recommended oil flow (liter/min.)

56

Working pressure (bar)

200

Boom	Type	Hexagonal, 4 sections
	Lifting angle / speed	0 – 80 degrees / 13 sec.
	Extension speed	11.4 m / 34 sec.
Hoist	Type	Spur gear reduction with mechanical brake
	Lifting capacity	6500 kg at 4 falls
	Speed	Min. 9.5 m/min. – Max. 12 m/min. at 4 falls
Slewing	Type	Worm gear reduction with hydraulic brake
	Angle	360 degrees, continuous rotation
	Speed (rpm)	2.0

Outrigger span (m)

5.7

Weight including outrigger (kg)

2650, Approx.

Safety device	Counter balance valve	Hydraulic swing brake
	Pilot check valve	Hook latch
	Pressure relief valve	Auto hoist brake

Options

OLP, Type of control, Aux. hoist, Aux. outrigger, Jib boom

Non CE Version

Hiab 160T-5 Basic data

Technical data

Hiab 160T-5

Max. lifting capacity (tm)	15.2
Max. working radius (m)	15.7
Max. working height (m)	16.9 Based on installation level

Outreach-capacity

Angle	1 st boom		2 nd boom		3 rd boom		4 th boom		5 th boom	
	R(m)	Q(kg)	R(m)	Q(kg)	R(m)	Q(kg)	R(m)	Q(kg)	R(m)	Q(kg)
80	0.61	6500	1.11	6000	1.60	4500	2.10	2400	2.59	1800
70	1.37	6500	2.35	4490	3.32	3110	4.30	2360	5.27	1800
60	2.09	5890	3.51	3270	4.94	2230	6.36	1670	7.79	1310
50	2.73	4890	4.56	2660	6.39	1790	8.22	1330	10.06	1030
40	3.28	4290	5.47	2290	7.65	1530	9.83	1120	12.02	860
30	3.74	3880	6.20	2040	8.67	1340	11.14	980	13.61	750
20	4.07	3560	6.75	1840	9.42	1200	12.10	870	14.78	650
10	4.27	3270	7.08	1670	9.88	1080	12.69	770	15.50	570
0	4.34	2970	7.19	1480	10.04	940	12.89	670	15.74	490

Recommended oil flow (liter/min.)

56

Working pressure (bar)

200

Boom	Type	Hexagonal, 5 sections
	Lifting angle / speed	0 – 80 degrees / 13 sec.
	Extension speed	11.4 m / 34 sec.

Hoist	Type	Spur gear reduction with mechanical brake
	Lifting capacity	6500 kg at 4 falls
	Speed	Min. 9.5 m/min. – Max. 12 m/min. at 4 falls

Slewing	Type	Worm gear reduction with hydraulic brake
	Angle	360 degrees, continuous rotation
	Speed (rpm)	2.0

Outrigger span (m)

5.7

Weight including outrigger (kg)

2770, Approx.

Safety device	Counter balance valve	Hydraulic swing brake
	Pilot check valve	Hook latch
	Pressure relief valve	Auto hoist brake

Options

OLP, Type of control, Aux. hoist, Aux. outrigger, Jib boom

Non CE Version

Hiab 160T-6 Basic data

Technical data

Hiab 160T-6

Max. lifting capacity (tm)	15.0
Max. working radius (m)	18.7
Max. working height (m)	19.9 Based on installation level

Outreach-capacity

Angle	1 st boom		2 nd boom		3 rd boom		4 th boom		5 th boom		6 th boom	
	R(m)	Q(kg)	R(m)	Q(kg)	R(m)	Q(kg)	R(m)	Q(kg)	R(m)	Q(kg)	R(m)	Q(kg)
80	0.63	6500	1.13	6000	1.62	4500	2.12	2400	2.61	1800	3.11	920
70	1.41	6500	2.38	4380	3.36	3050	4.33	2310	5.31	1800	6.28	920
60	2.14	5730	3.57	3170	4.99	2170	6.42	1620	7.84	1270	9.27	920
50	2.80	4750	4.63	2560	6.46	1740	8.30	1280	10.13	980	11.96	800
40	3.37	4170	5.55	2200	7.74	1480	9.92	1080	12.10	820	14.29	640
30	3.83	3760	6.30	1950	8.77	1290	11.24	930	13.70	700	16.17	540
20	4.17	3450	6.85	1750	9.53	1150	12.21	820	14.88	610	17.56	460
10	4.38	3160	7.19	1580	9.99	1020	12.80	720	15.61	530	18.41	400
0	4.45	2870	7.30	1400	10.15	890	13.00	620	15.85	440	18.70	320

Recommended oil flow (liter/min.)

56

Working pressure (bar)

200

Boom	Type	Hexagonal, 6 sections
	Lifting angle / speed	0 – 80 degrees / 13 sec.
	Extension speed	14.25m / 34 sec.
Hoist	Type	Spur gear reduction with mechanical brake
	Lifting capacity	6500 kg at 4 falls
	Speed	Min. 9.5 m/min. – Max. 12 m/min. at 4 falls
Slewing	Type	Worm gear reduction with hydraulic brake
	Angle	360 degrees, continuous rotation
	Speed (rpm)	2.0

Outrigger span (m)

5.7

Weight including outrigger (kg)

2880, Approx.

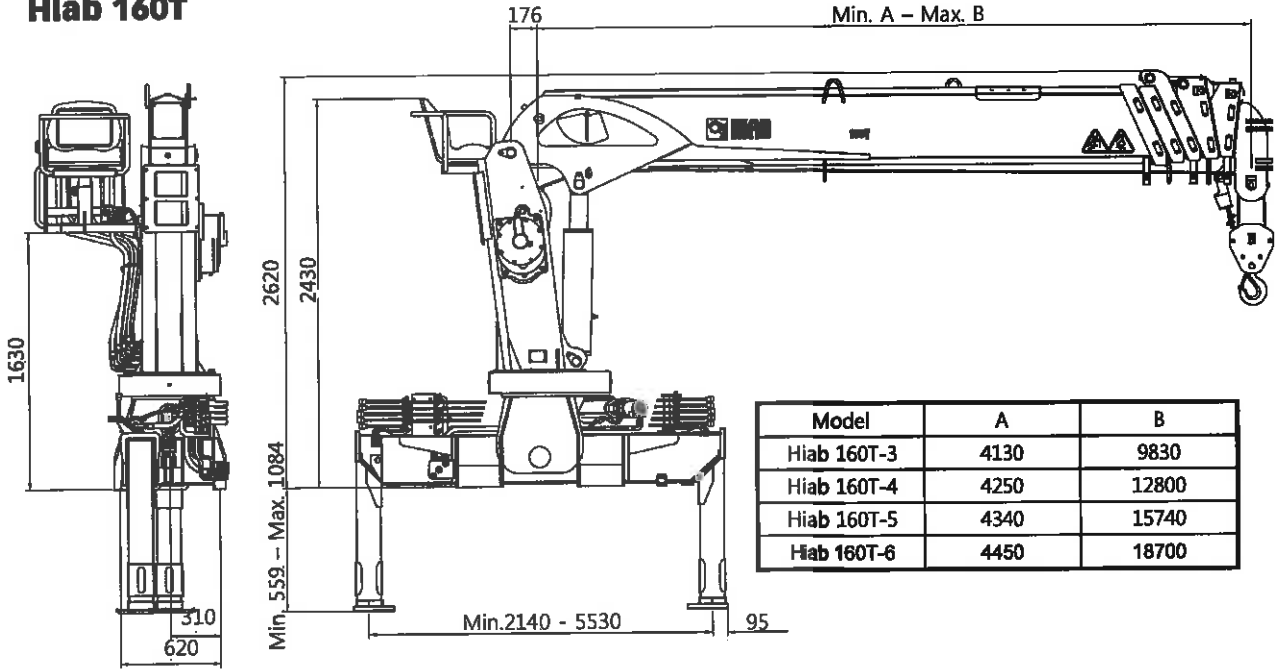
Safety device	Counter balance valve	Hydraulic swing brake
	Pilot check valve	Hook latch
	Pressure relief valve	Auto hoist brake

Options

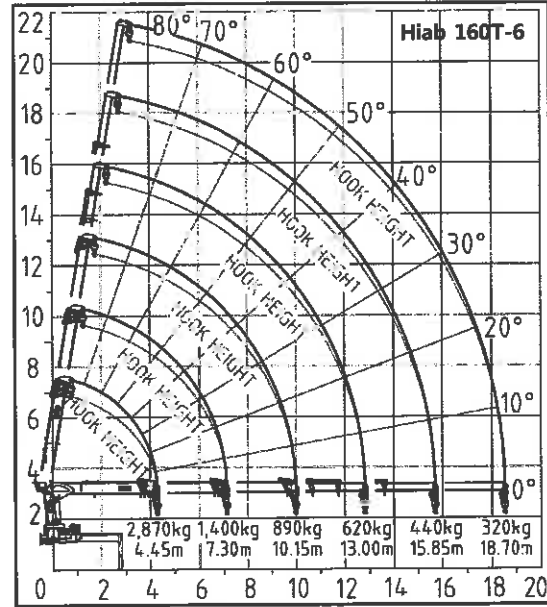
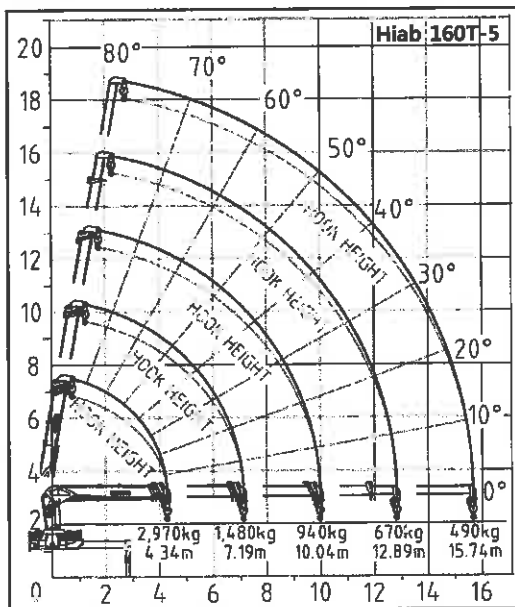
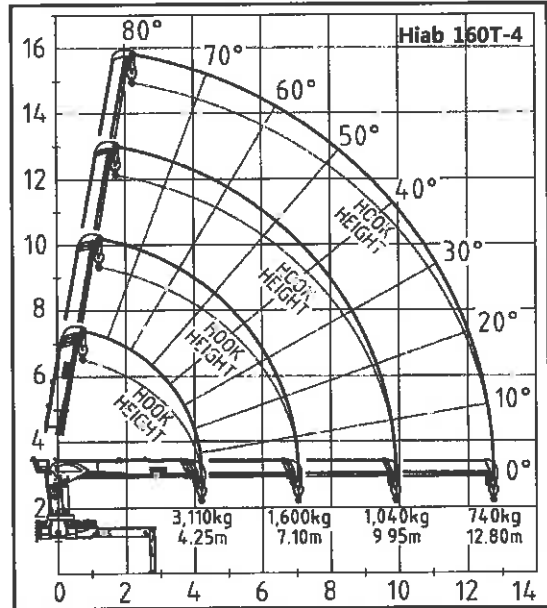
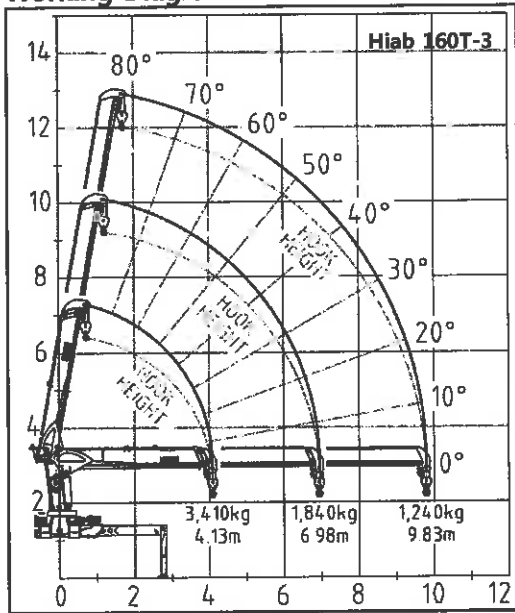
OLP, Type of control, Aux. hoist, Aux. outrigger, Jib boom

Non CE Version

Hiab 160T



Working Diagram



Global presence and local service bring our solution closer to our customers



Cargotec improves the efficiency of cargo flow by offering solutions for the loading and unloading of goods on land and at sea – wherever cargo is on the move. Cargotec's main daughter brands for cargo handling Hiab, Kalmar and MacGregor are global market leader in their fields. www.cargotec.com



Cargotec Korea Ltd

356 Taesung-ri
Gangnae-Myon chongwon-Gun
Chungbuk 363-893 South Korea
Tel : +82 43 231 6300
Fax : +82 43 231 6200
www.cargotec.com
www.hiab.co.kr