

**BOOM** telescopic in three sections, the two telescopic sections extended synchronously and have an automatic leveling device of the platform.

**BASKET** made of Fiberglass or metal , rotation 50° + 50° by hydraulic cylinder.

**OUTREACH DEVICE** To get a greater outreach Our machines have an automatic outreach limiter device depending of the weight on the basket. This system is duplicate , the first one totally hydraulic and the second one electrical with a pre-warming light on the control panel.

**ROTATION** 420° by a planetary gear reducer system with automatic disk brake and activated by hydraulic engine.

**OUTRIGGERS** at the front projecting diagonally, the rear outriggers have a vertical cylinder, this ensuring perfect stability and safety at work. An automatic accelerator is incorporate for the rapid emplacement of the outriggers.

**FRAME** a false frame is fitted onto the truck chassis to absorb all flexion and torsion stresses caused by the platform, the outriggers are fitted to it as well as the superstructure.

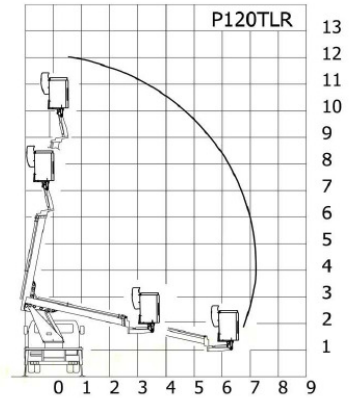
**CYLINDERS** Double effect with Vulkolan joints, safety locking valves to guarantee that the boom will be totally immobile even if there is a breakage in any of the pipelines.

**CONTROLS** The boom and superstructure operation controls are duplicated with a set of high precision controls located in the basket. To guarantee correct functioning, the controls are hydraulic to operate the machine safe and softness. Basket controls have a protective cover for the operator's hands.

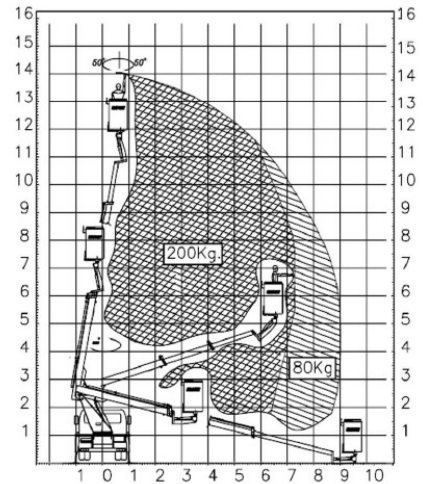
**HYDRAULIC CIRCUIT** by hydraulic pump activated from the truck engine, emergency pump, tank, filters, safety and locking valves, double effect valves and pressure pipelines.

**SAFECTY DEVICE** Our machines have all the safety devices required in the works of people on height. An automatic system ensures that the outriggers are correctly placed on the ground before raising the boom. A manual emergency pump, discharge valve that automatically transfers the hydraulic fluid if the controls are not operating. Descent and locking regulation valves in all the cylinders etc...

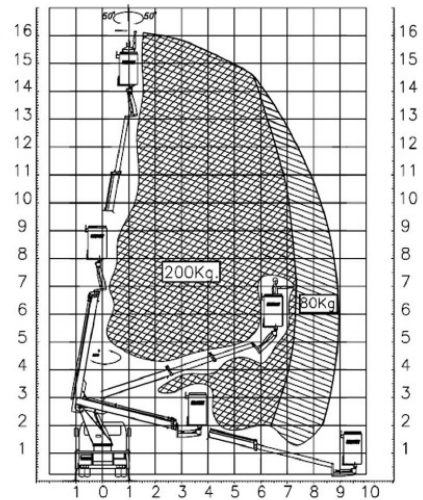
**P120TLR**



**P140TLR**



**P160TLR**



MODEL	WORKING HEIGHT	HEIGHT TO BASKET FLOOR	BASKET LOAD	PEOPLE ON BASKET	OUTRIGGERS	BASKET ROTATION
P120TLR	12 mts	10 mts	200 Kgs.	2	4	50° + 50°
P140TLR	14 mts	12 mts	200 Kgs.	2	4	50° + 50°
P160TLR	16 mts	14 mts	200 Kgs.	2	4	50° + 50°