

# Hiab XS 422 CLX

## Capacity 37 tm



Product brochure



# Reaching further

## **The HIAB XS 422 CLX – excellent load handling**

The HIAB XS 422 CLX offers the best performance in its class, balancing power and precision, to give the best productivity. The crane uses the well known E-link concept and offers up to 8 hydraulic extensions and more than 21 metres of hydraulic outreach. Thanks to its 6.5, 7.0 and 8.0 metres stabilizer span options, this model reaches the best stability figures in any installation and for every model version. The built-in versatility of the HIAB XS 422 gives all freedom needed to match the required application. The model is available with two different boom systems, each one differently suited for high-up and long-out working areas. These are the regular all round A-boom and the P-boom system, ideal for big and bulky loads at close quarters.

## **Designed for the tough jobs, every day**

Designing cranes for rough and tough operation is one of Hiab's hallmarks. This crane is no exception. The crane is designed to be on the job, day in and day out, where it belongs. However, servicing the crane can't be foreseen. In order to make the servicing time as short as possible we have fitted the crane with JIC couplings and easily replaceable large slide pads. Before you know it the crane will be back at the jobsite, doing what it does best, creating solutions and versatility for your business.

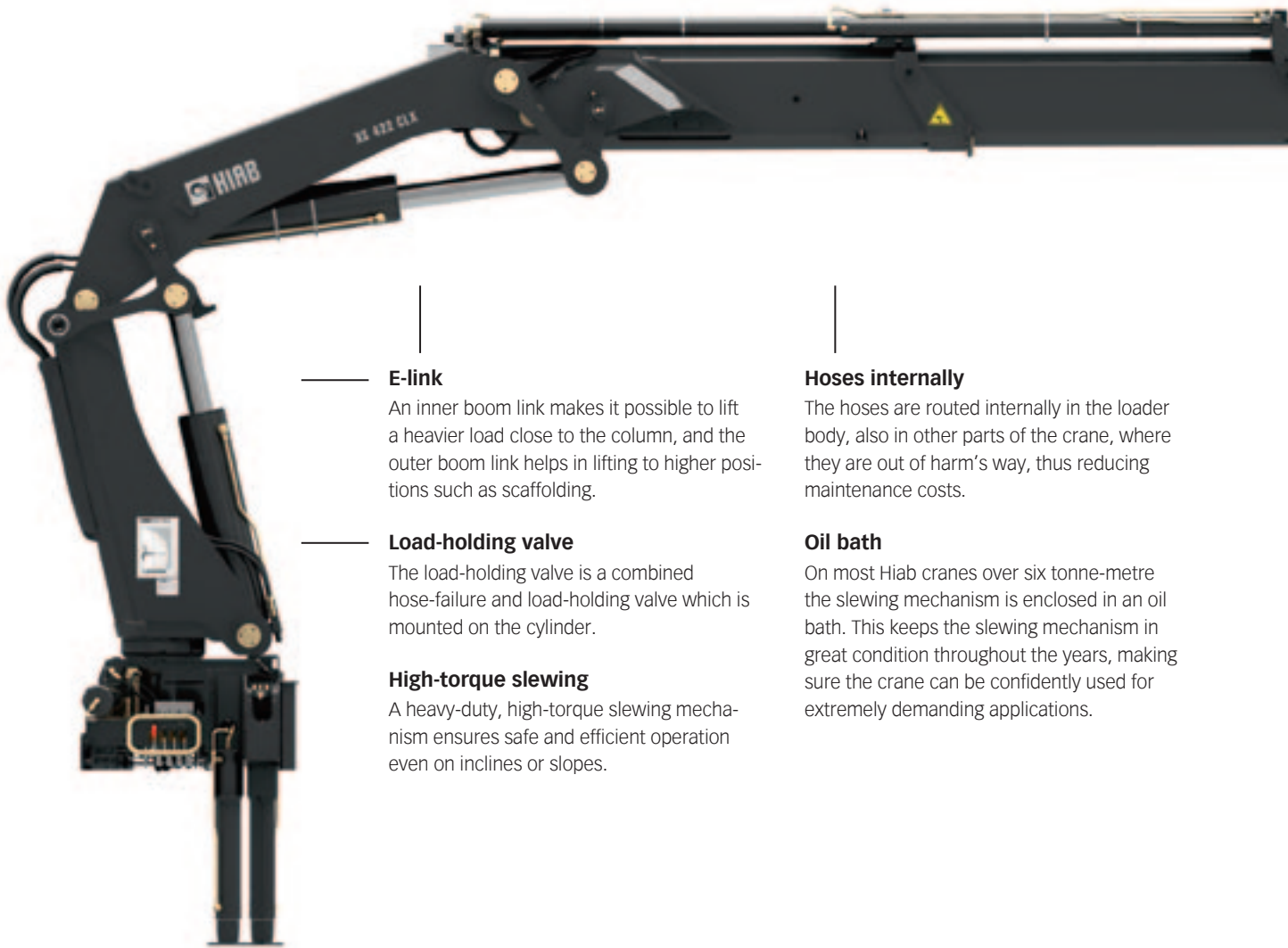
# Hiab XS 422 CLX Capacity 37 tm

## Front runners in boom design

A Hiab crane is built to withstand extreme loading under all kinds of circumstances, in all field conditions. Keeping the boom reliable, tough and sturdy under extreme loading has made Hiab a world leader in crane boom engineering. Taking a closer look at the crane, one can point out a number of features that our customers benefit from.

## Hexagonal boom profile

The hexagonal profile used on Hiab booms is a ground-breaking design introduced by Hiab many years ago. It is now standard throughout the market for loader cranes. Even the smallest Hiab crane benefits from this design.



### E-link

An inner boom link makes it possible to lift a heavier load close to the column, and the outer boom link helps in lifting to higher positions such as scaffolding.

### Load-holding valve

The load-holding valve is a combined hose-failure and load-holding valve which is mounted on the cylinder.

### High-torque slewing

A heavy-duty, high-torque slewing mechanism ensures safe and efficient operation even on inclines or slopes.

### Hoses internally

The hoses are routed internally in the loader body, also in other parts of the crane, where they are out of harm's way, thus reducing maintenance costs.

### Oil bath

On most Hiab cranes over six tonne-metre the slewing mechanism is enclosed in an oil bath. This keeps the slewing mechanism in great condition throughout the years, making sure the crane can be confidently used for extremely demanding applications.



### **X-function**

Angling the outer boom upwards relative to the inner boom gives greater accessibility in confined spaces.



### **Hexagonal boom profile**

The hexagonal profile ensures the boom is always in perfect balance, thanks to its shape and large support surface. The profile also minimizes boom deflection, which reduces maintenance costs and increases efficiency.



### **JIC couplings**

JIC couplings are standard on most Hiab cranes. They ensure easy and secure coupling, but are still very simple to disconnect for service.



### **Large slide pads**

The hexagonal profile enables the use of larger slide pads. This makes the extensions move more smoothly and reduces mechanical wear on the boom.



### **Attachable tools**

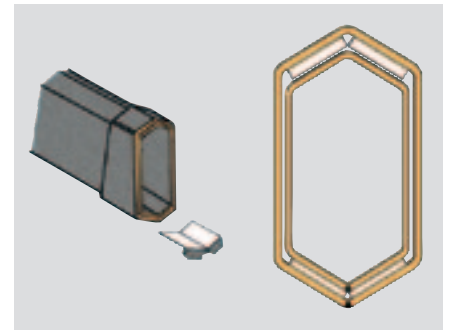
A wide range of attachable tools are available for your Hiab crane. These make sure you can carry out a lot of different tasks.

## CLX control system

The CLX control system gives you an excellent and versatile crane, providing all the functionality you need to perform a wide range of general cargo handling tasks. CLX cranes are controlled manually via side controls. The hydraulic system of a CLX crane features load holding valves with an integrated hose failure function, as well as port relief valves to prevent the crane from overloading. The main control valve is the Hiab Valve 80 which enables the crane to perform more than one crane function at the same time, smoothly and efficiently.

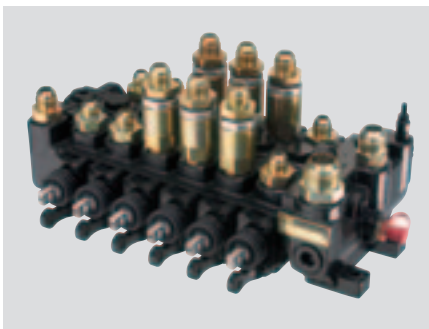
## Valve 80

The Hiab Valve 80 is a top-of-the-line open-centre valve based on well-proven technique which gives superb reliability. It features very good dynamic characteristics and performs with ease while slewing and handling numerous operations at the same time. The valve can handle large oil flows, distributing great power to the cylinders and all other hydraulic functions, and yet it can be controlled with high precision.



## Hexagonal boom profile

The hexagonal profile used on Hiab booms is a ground-breaking design introduced by Hiab many years ago. It is now standard throughout the market for loader cranes. Even the smallest Hiab crane benefits from this design.



## Valve 80

The Hiab Valve 80 is a top-of-the-line open-centre valve based on well-proven technique which gives superb reliability. The valve handles large oil flows and provides great precision and ease of operation.



## Side controls

The levers are positioned at the crane base. Cross-controls give the same sequence of levers on both sides.



**Cargotec** improves the efficiency of cargo flows by offering solutions for the loading and unloading of goods on land and at sea – wherever cargo is on the move. Cargotec's main daughter brands for cargo handling Hiab, Kalmar and MacGregor are global market leaders in their fields. [www.cargotec.com](http://www.cargotec.com)

