

# PNT 230

Altezza max. di lavoro  
Max. Working height  
Max. Arbeitshöhe  
**22.5 m**

Braccio max. di lavoro  
Max. Working boom extension  
Max. Arbeitsausladung  
**11.3 m**

Portata  
Capacity  
Tragfähigkeit  
**Max. 230 Kg**

N° operatori  
N° operators  
N° de Arbeiter  
**2**

Forza manuale max.  
Max. manual force  
Max. Handkraft  
**40 daN**

Velocità max. vento  
Max. wind speed  
Max. Windgeschwindigkeit  
**12.5 m/s**

Braccio di lavoro  
Working boom  
Arbeitsarm

**Doppio Pantografo + Braccio telescopico a 3 sezioni**  
Double pantograph + Telescopic end 3 section element

Angolo braccio  
Boom angle  
Armswinkel  
**-22°/+80°**

Rotazione sovrastruttura  
Upperstructure rotation  
Drehung des Aufbau  
Circa **550°**

Piattaforma  
Platform  
Hubarbeitsbühne  
Alluminio 1400x710x1115 mm  
Aluminium 1400x710x1115 mm

Rotazione piattaforma  
Platform rotation  
Drehung des Hubarbeitsbühne  
Idraulica 90°dx+ 90°sx  
Hydraulic 90°RH+ 90°LH

Livellamento piattaforma  
Platform levelling  
Nivellierung der Hubarbeitsbühne  
Idraulico  
Hydraulic

Stabilizzatori  
Outriggers  
Abstützungen

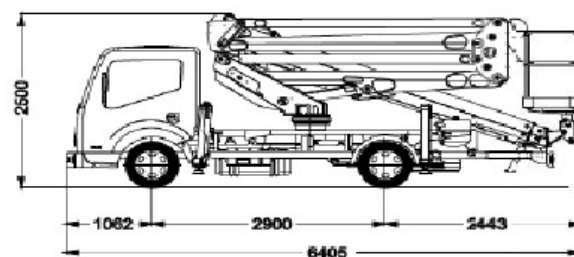
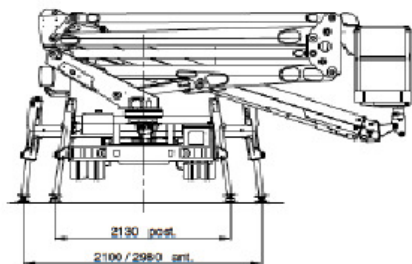
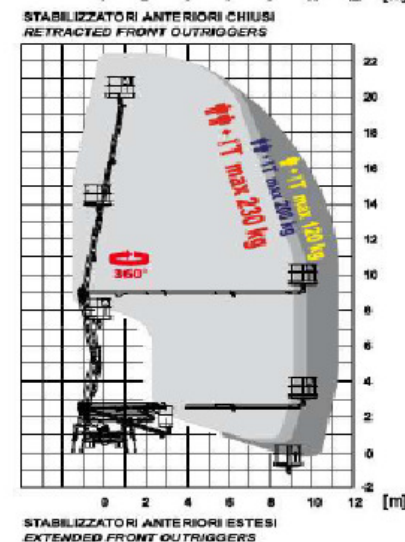
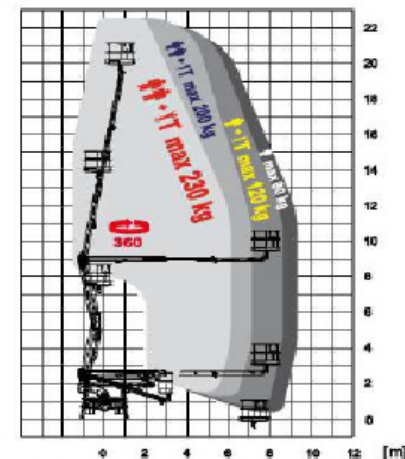
Estensione orizzontale idraulica, vertical ant./post.  
Hydraulic horizontal extension, "H" type at front/rear

Scartamento minimo stab.  
Outriggers minimum width  
Spurweite Abstützungen min./max.  
Ant. 2.10/2.98 m - Aperti 2.13 m  
Front 2.10/2.98 m - Rear 2.13 m

Comandi  
Controls  
Steuerungen

Elettroidraulici  
Electro-hydraulic

Installazione minima  
Minimum installation  
Mindeste Installation  
**3500 Kg**



STABILIZZAZIONE IN SAGOMA

